



FS-BS-50 High Speed Focus Stage

FEATURES

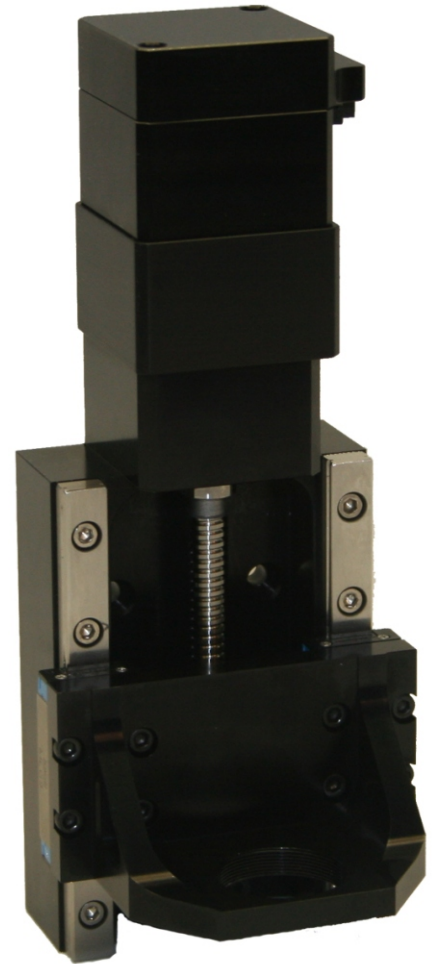
- Velocities up to 75mm/sec
- 2µm accuracy
- Optional error mapping for increased accuracy
- Servo or stepper motor drive

OPTIONS

- Stepper Motor
Max step resolution < .1 micron
- Servo Motor
- Vacuum Preparation to 10⁻⁷ Torr
- Clean room preparation to Class 100

Recirculating Ball Bearing Ball crew Actuated Table

The FS-BS Series stages are designed specifically for high speed focusing applications for semiconductor, imaging, and biomedical equipment manufacturers. These reliable ball screw driven stages combine high speed and high accuracy in a cost effective and compact package. The moving saddle with integrated optics mount has been developed specifically for low mass and high stiffness. Standard mounting thread is 26mm X 36 TPI , custom objective mounts are an available option. Saddle can be customized for other payloads such as beam steering galvanometers and distance sensing devices for auto-focus applications.



Model	FS-BS-50
Travel	50mm
Drive	Servo motor with Ball Screw
Encoder resolution	0.1µm - 1.0µm
Accuracy Full Travel(µm)	
Open Loop	6.0
Encoder	2.0
Repeatability(µm)	
Open Loop	2.0
Encoder (0.1µm resolution)	0.5
Straightness(µm)	3.0
Flatness(µm)	3.0
Pitch(arc-sec)	10.0
Yaw(arc-sec)	8.0
Max Velocity(mm/s)	75.0
Ballscrew Lead (mm)	2
Load Capacity (Kg)	5



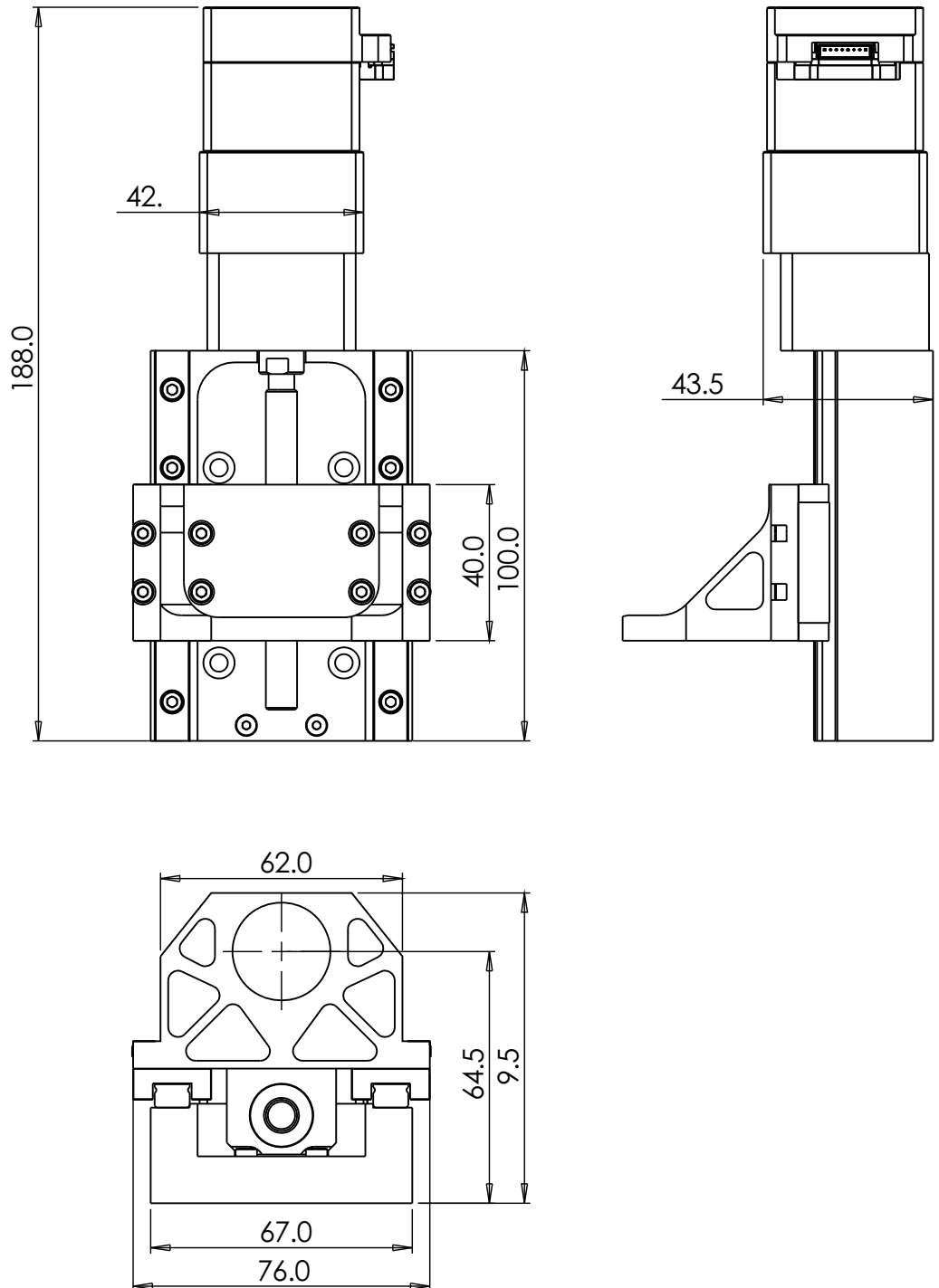
FS-BS-50 Series Precision Motion Platform

Dimensions are in mm
Additional envelope dimensions are
available upon request.

Model #22000 Shown. Final envelope
depends on stage configuration.

FEATURES

- Optic plate can have custom threads for any optic
- Stage mounting holes counter bored for M4 screw on 35mmX50mm pattern



GRIFFIN MOTION, LLC | PO BOX 1298 | HOLLY SPRINGS, NC 27540
P: 866.906.2709 | F: 919.882.1430 | E: sales@griffinmotion.com
www.griffinmotion.com