



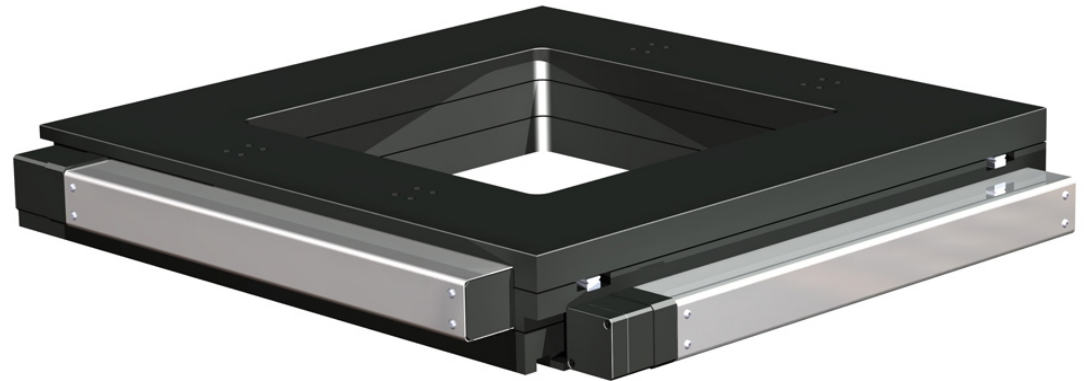
# CXY-BS-O-300 Series Precision Motion Platform

## FEATURES

- Compact integrated construction
- Velocities up to 150mm/sec
- 15µm accuracy
- Optional error mapping for increased accuracy
- Linear encoder to .025µm resolution

## OPTIONS

- Stepper Motor  
Max step resolution <.1 micron
- Servo Motor
- Linear or Rotary encoder
- Steel or Robax encoder scale
- Quadrature or sinusoidal encoder output
- Vacuum Preparation to 10<sup>-7</sup> Torr
- Clean room preparation to Class 100



## Open Aperture Recirculating Bearing Ballscrew Actuated XY Table

The **CXY-BS-O-300 Series** recirculating ball bearing stage is designed to meet 'head-on' the demands of factory automation and semiconductor processing applications. These compact ball screw driven stages combine high speed and high accuracy in a cost effective package for a variety of applications.

The **CXY-BS Series** stages deliver high accuracy combined X-Y axis motion as a result of their extraordinary levels of orthogonality and parallelism not

typically found in screw driven mechanical bearing stages.

The standard open loop configuration achieves sub micron repeatability and accuracy better than 20µm in a 300mm travel stage. With the addition of optional linear encoders, repeatability of 0.3µm and accuracy of 10µm is guaranteed. A repeatable reference index for homing and integrated limit switches, for independent right and left end of travel limits, are included with the linear encoder option.

Model	CXY-BS-O-300
Travel	300mm x 300mm
Drive	Ball Screw
Encoder resolution	0.025µm - 1.0µm
Accuracy Full Travel(µm)	
Encoder	10.0
Repeatability(µm)	
Encoder (0.1µm resolution)	0.3
Straightness(µm)	8.0
Flatness(µm)	10.0
Orthogonality(arc-sec)	5.0
Pitch(arc-sec)	12.0
Yaw(arc-sec)	6.0
Max Velocity(mm/s)	150.0
Ballscrew Lead (mm)	2
Load Capacity (Kg)	200
Aperture Size (mm)	300 X 300



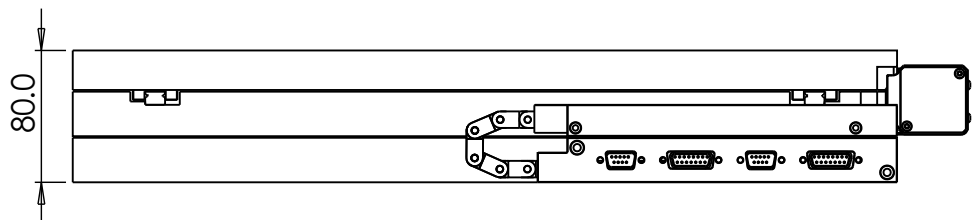
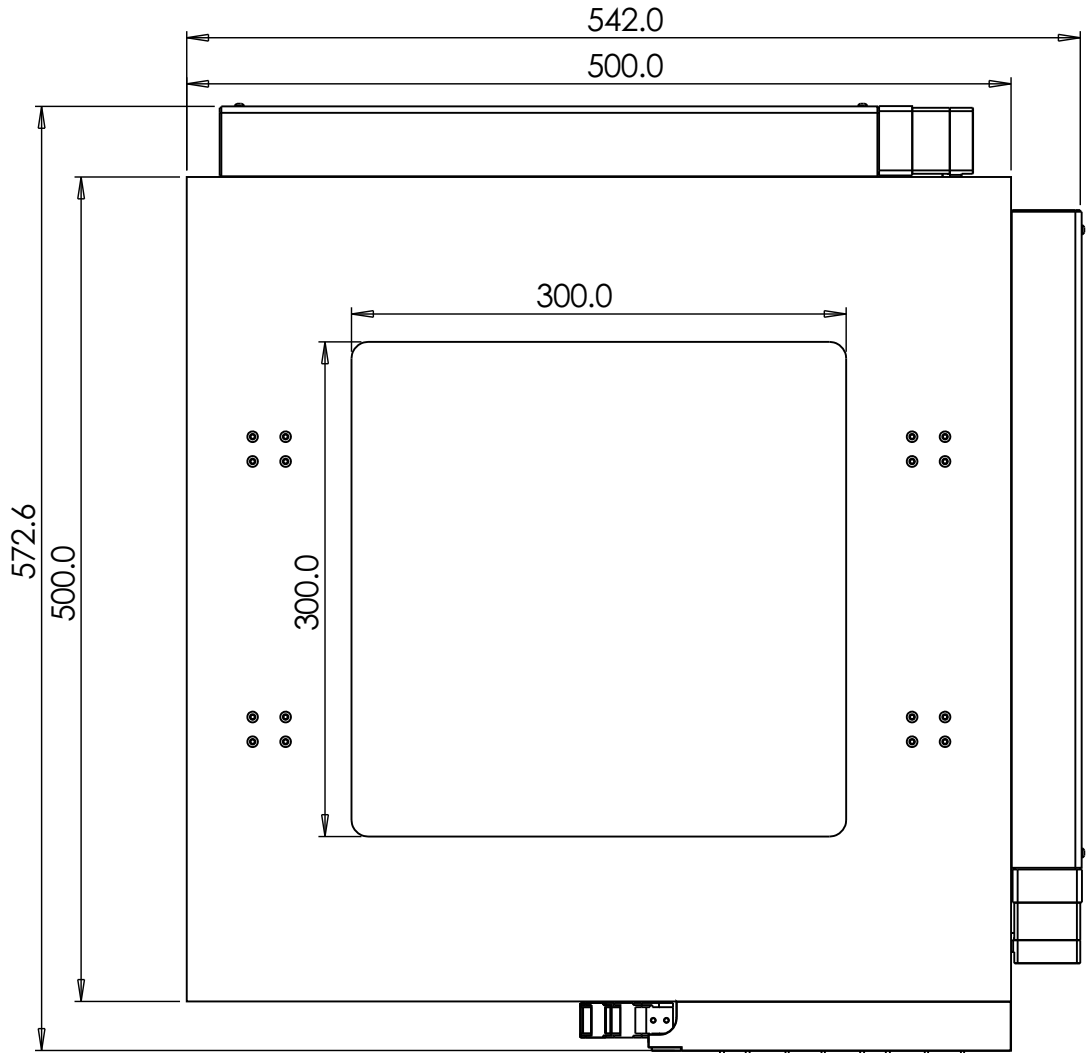
# CXY-BS Series Precision Motion Platform

Dimensions are in mm  
Additional envelope dimensions  
Available upon request.

## FEATURES

- Custom threaded mounting holes available
- Cable track for wire protection.
- DB 9 connectors for motors and DB 15 connectors for encoders.

Model #21403 Shown. Final envelope depends on stage configuration.



GRIFFIN MOTION, LLC | PO BOX 1298 | HOLLY SPRINGS, NC 27540  
P: 866.906.2709 | F: 919.882.1430 | E: sales@griffinmotion.com  
www.griffinmotion.com